



WHAT IF SOMEONE INFRINGES YOUR COPYRIGHT?

WHAT IS COPYRIGHT INFRINGEMENT?

Infringement occurs when a person copies, distributes, performs, or displays all or part of a copyrighted work.



WHAT CAN YOU DO?

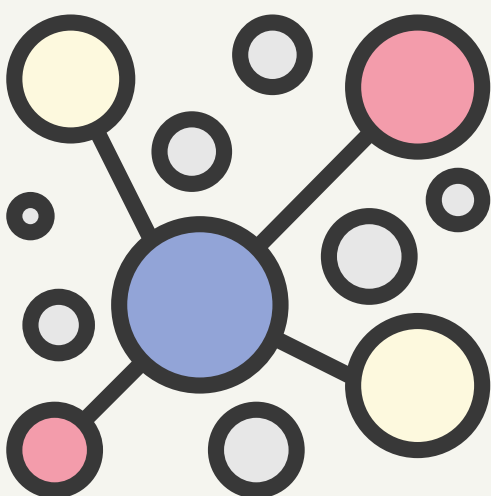
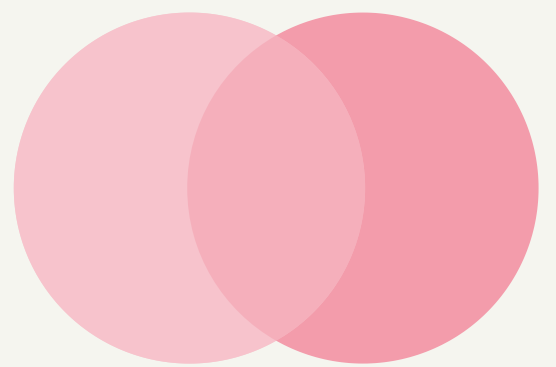
If you can prove infringement – either by getting the infringer to admit guilt, or by showing that he had access to your work and that his work is substantially similar – then you can recover monetary damages

DID YOU KNOW?

In 2011, Kanye West was sued for sampling Sly Johnson's song "Different Strokes" to create his new song "The Joy" on Kanye's and Jay-Z's album "Watch The Throne." The case was settled out of court for an undisclosed amount.

HOW CAN YOU PROVE SIMILARITY?

There are two ways. One is to show "fragmented literal similarity" – meaning, that the infringing work contains specific copied elements of your original work.



WHAT'S THE SECOND WAY?

The second type of similarity – called "comprehensive non-literal similarity" – is more of a qualitative "look and feel" issue. It is infringement if the structure of one work is substantially similar to another.

LEARN MORE AT [MICHELSONIP.COM](https://www.michelsonip.com)

ADAPTED FROM [WHAT IF SOMEONE INFRINGES YOUR COPYRIGHT?](#), A MICHELSON IP ANIMATED SHORT